



HUSTEF

HUNGARIAN SOFTWARE TESTING FORUM

Navigating Complexities in Social Media API Integration Testing: Strategies and Solutions

By Marina Rukavitsyna

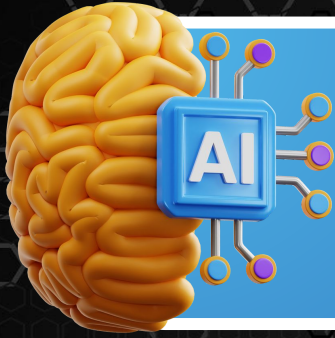
9 October, 2024



About Me

- Software engineer at HelloFresh
- 5 years - backend engineer
- 15 years in tech
- Not QA, but have QA tasks
- Led Social Media API integration



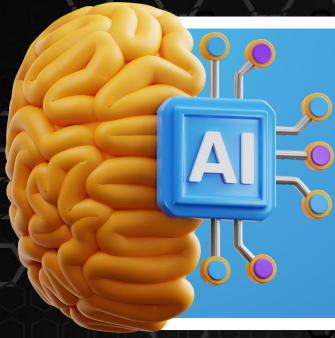


01

Navigating
no-duplicate-con
tent policies and
bot detection
systems

Introduction





AI

Introduction

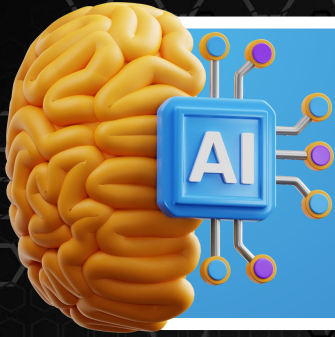
01

Navigating
no-duplicate-con
tent policies and
bot detection
systems

02

Effectively
managing Social
Media API
versioning





AI

Introduction

01

Navigating
no-duplicate-con
tent policies and
bot detection
systems

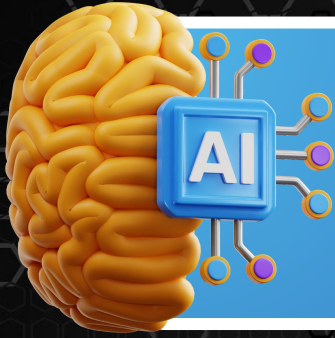
02

Effectively
managing Social
Media API
versioning

03

Evaluating
various testing
strategies,
including their
pros and cons





AI

Introduction

01

Navigating no-duplicate-content policies and bot detection systems

02

Effectively managing Social Media API versioning

03

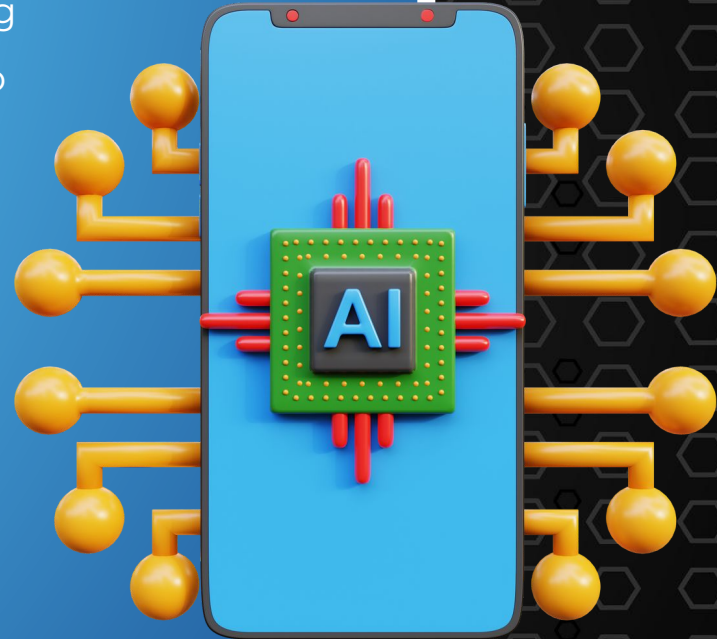
Evaluating various testing strategies, including their pros and cons

04

Introducing a hybrid testing method that leverages AI for unique content generation

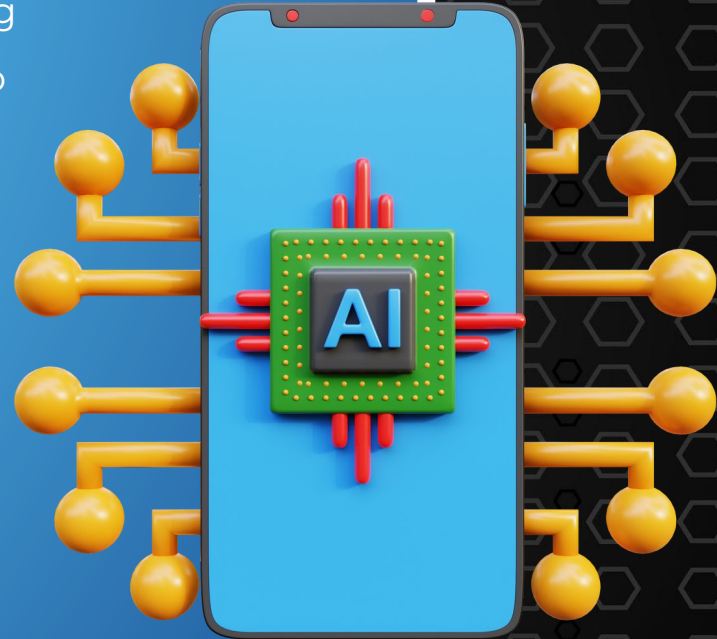
What is Social Media API Integration

Social Media API integration - process of connecting and interacting with social media platforms' APIs to enable applications to perform various operations



What is Social Media API Integration

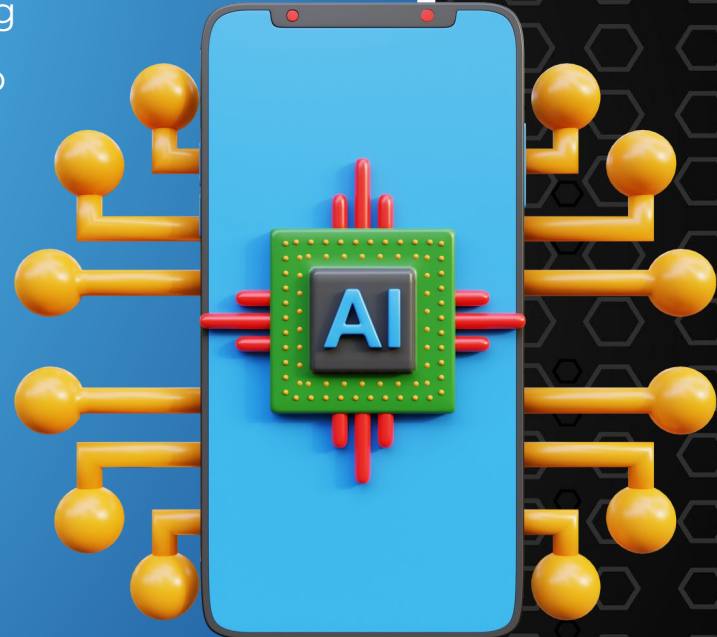
Social Media API integration - process of connecting and interacting with social media platforms' APIs to enable applications to perform various operations, such as:



What is Social Media API Integration

Social Media API integration - process of connecting and interacting with social media platforms' APIs to enable applications to perform various operations, such as:

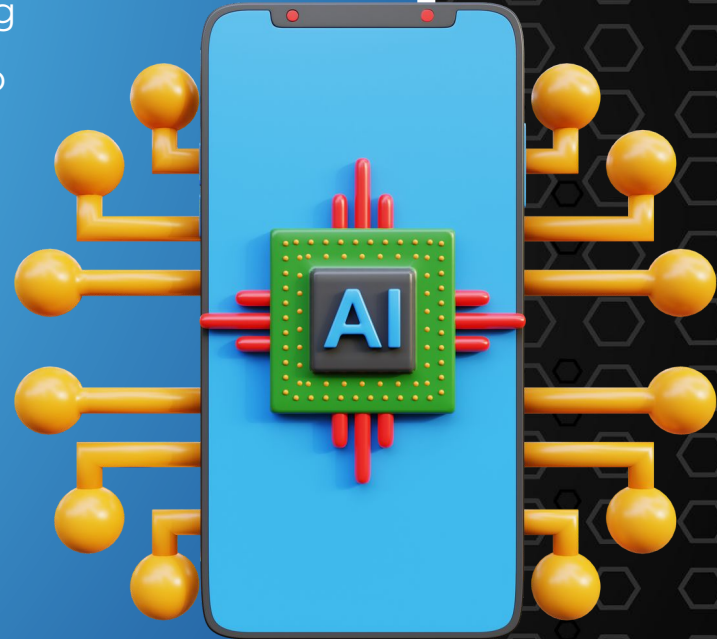
- **Posting content**



What is Social Media API Integration

Social Media API integration - process of connecting and interacting with social media platforms' APIs to enable applications to perform various operations, such as:

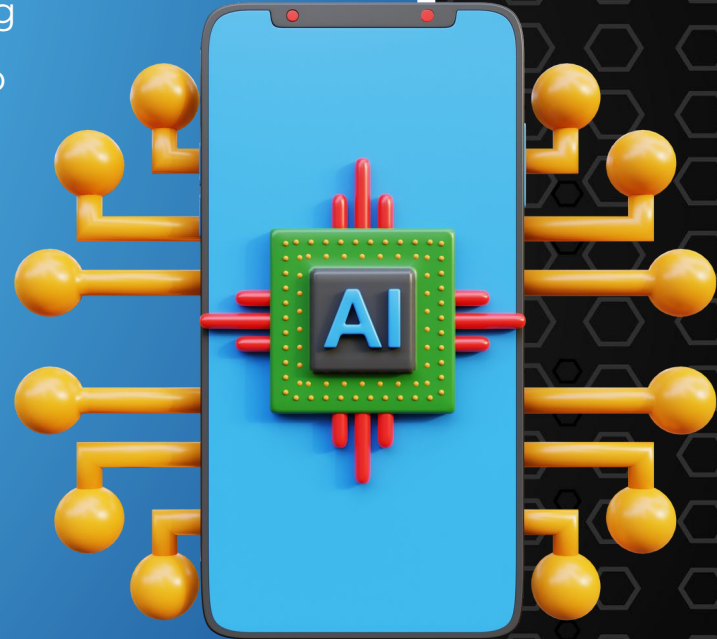
- **Posting content**
- **Retrieving user data**



What is Social Media API integration

Social Media API integration - process of connecting and interacting with social media platforms' APIs to enable applications to perform various operations, such as:

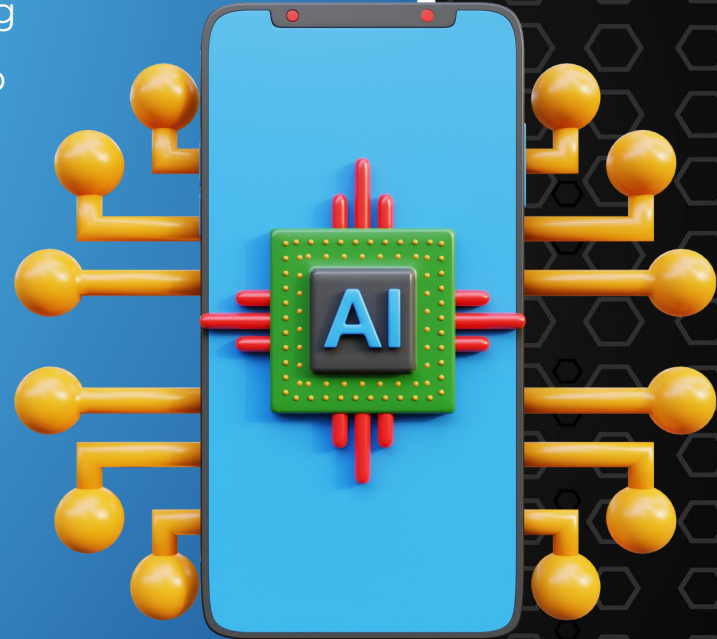
- **Posting content**
- **Retrieving user data**
- **Managing accounts**



What is Social Media API Integration

Social Media API integration - process of connecting and interacting with social media platforms' APIs to enable applications to perform various operations, such as:

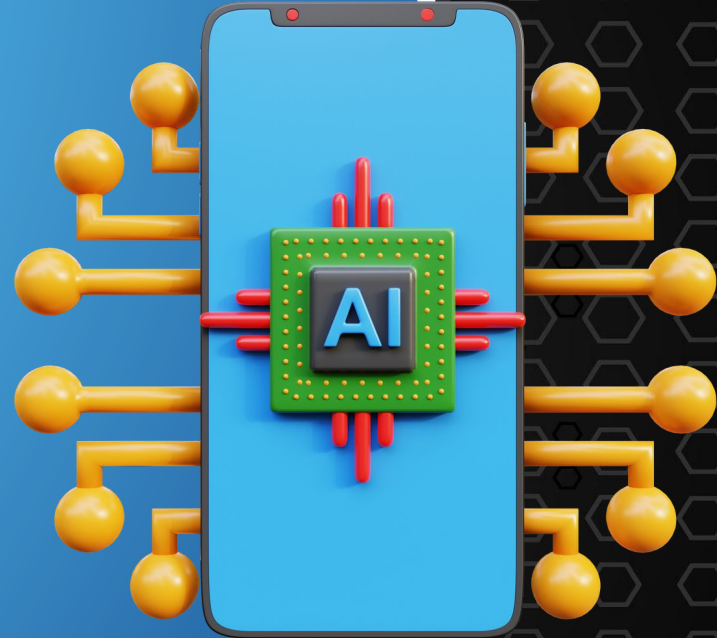
- **Posting content**
- **Retrieving user data**
- **Managing accounts**
- **Analyzing social interactions**



Why to Test Social Media API

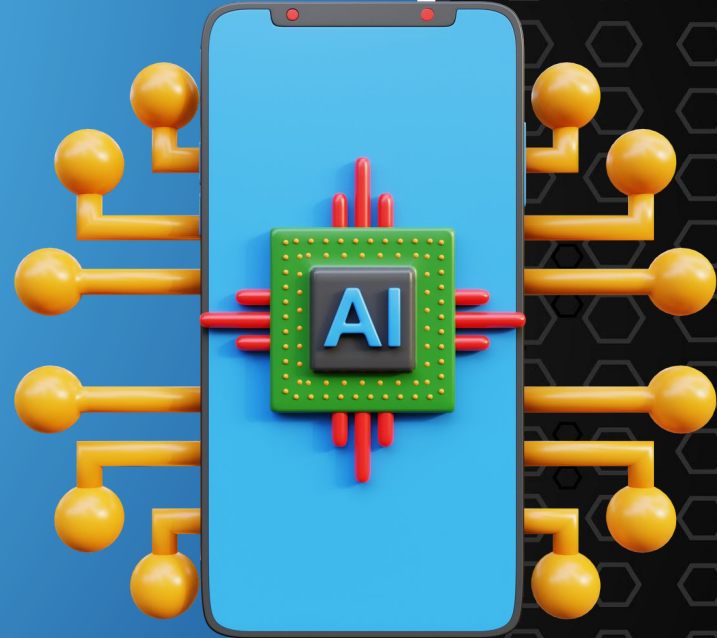
Integration

- Ensure functional accuracy
- Enhance user experience
- Validate data integrity
- Reduce development costs
- Ensure compatibility
- Boosts confidence



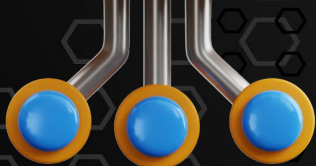
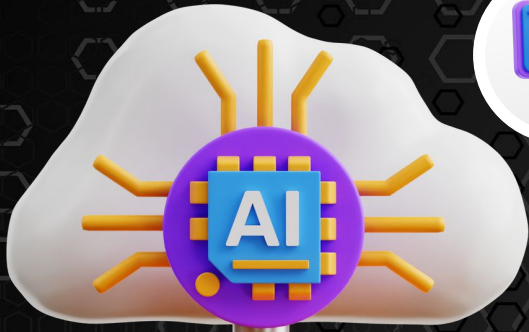
Testing Strategies

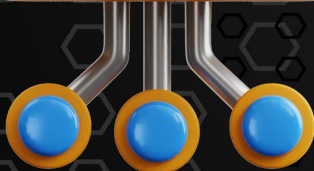
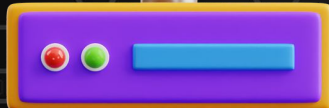
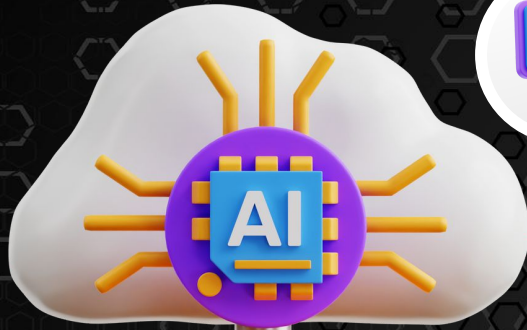
- Unit Testing
- Integration Testing
- Mocking
- End-to-End (E2E) Testing
- Manual Testing





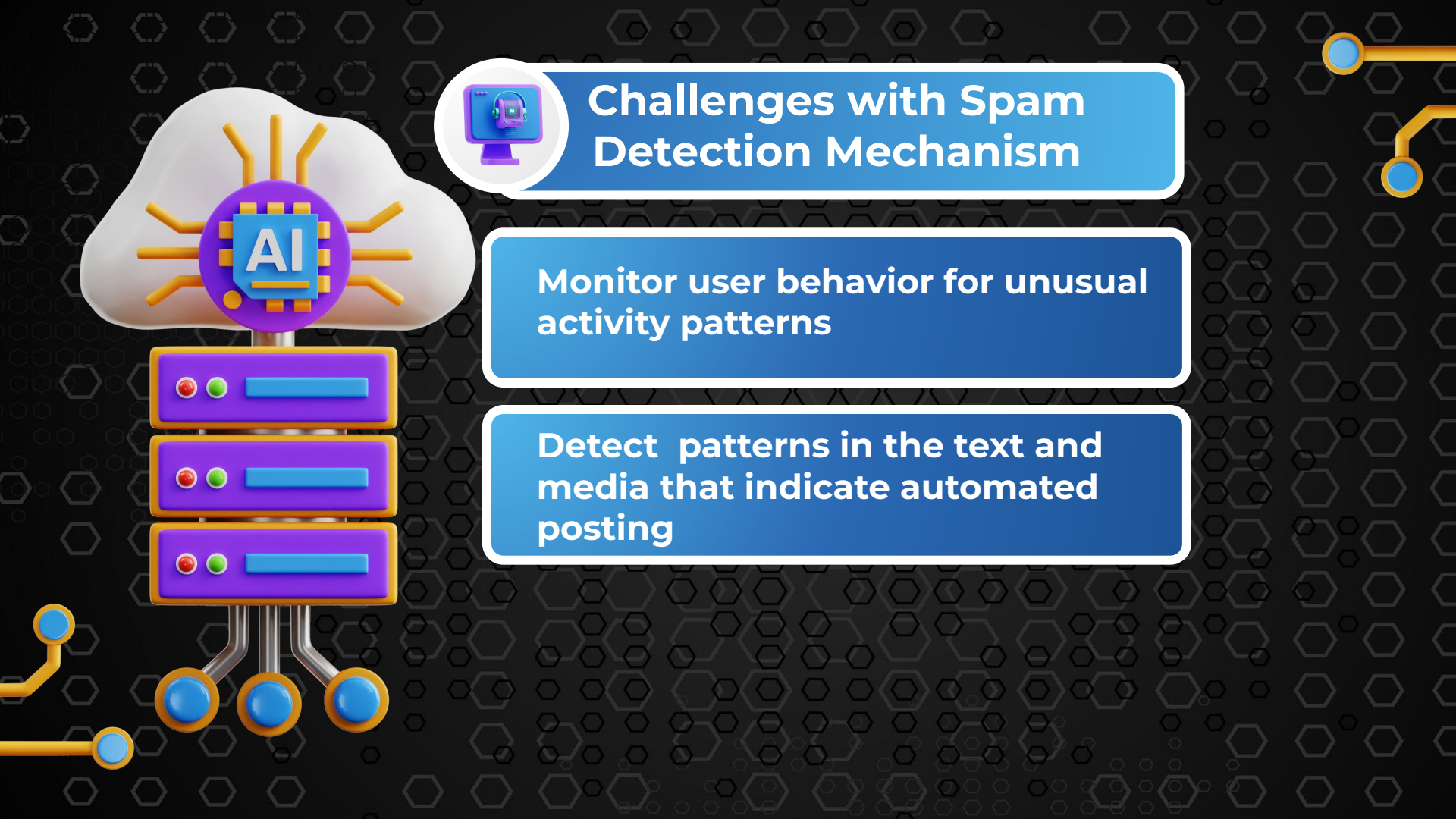
Challenges with Spam Detection Mechanism





Challenges with Spam Detection Mechanism

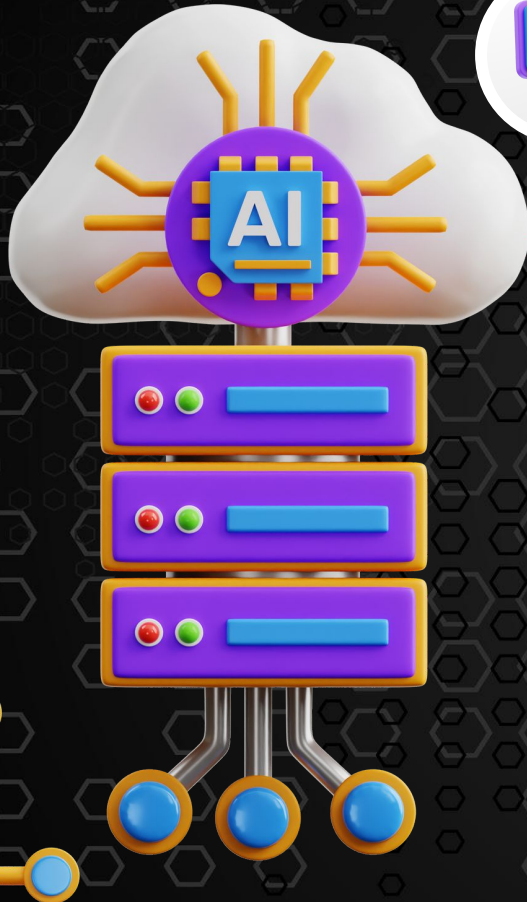
Monitor user behavior for unusual activity patterns



Challenges with Spam Detection Mechanism

Monitor user behavior for unusual activity patterns

Detect patterns in the text and media that indicate automated posting



Challenges with Spam Detection Mechanism

Monitor user behavior for unusual activity patterns

Detect patterns in the text and media that indicate automated posting

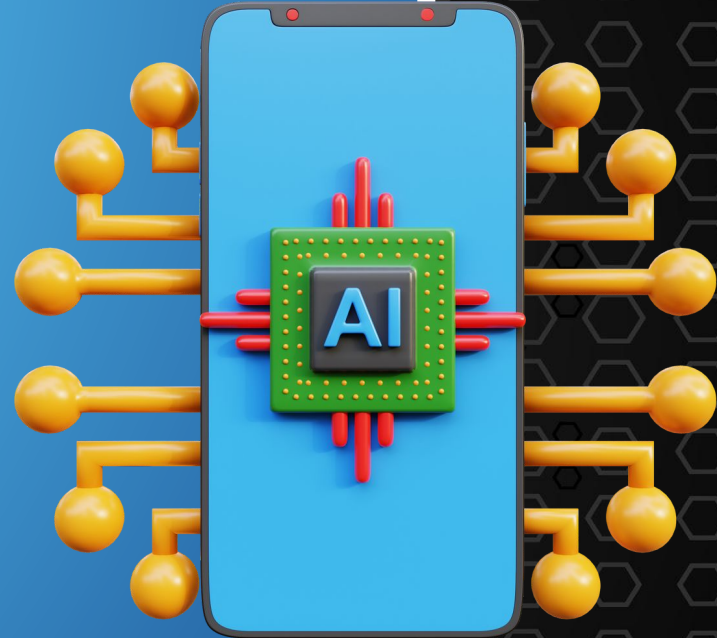
Scan for repetitive or identical content across multiple posts

Disabled Account




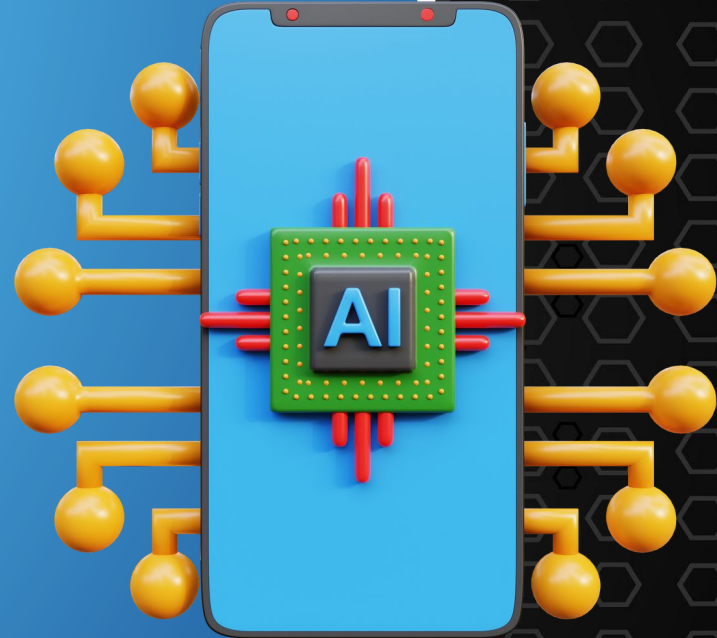
Testing Strategies

- Unit Testing
- Integration Testing
- Mocking
- End-to-End (E2E) Testing
- Manual Testing





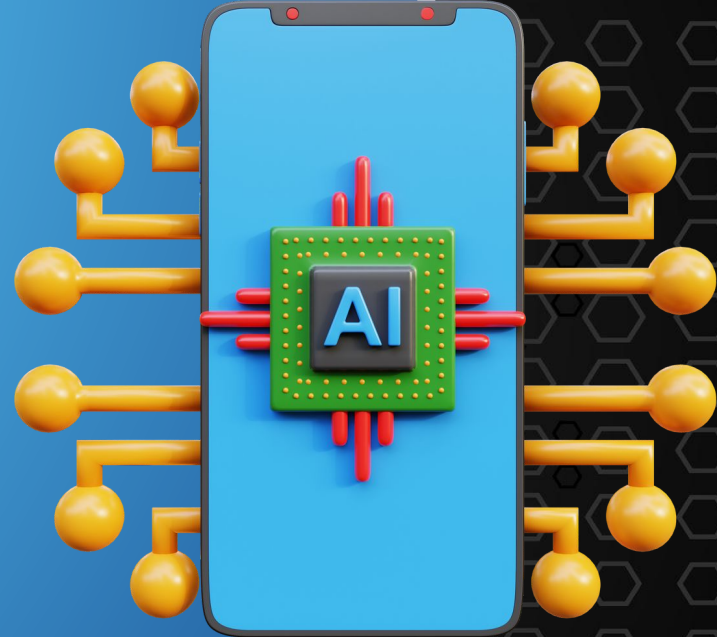
Testing Strategies

- Unit Testing 
- Integration Testing
- Mocking
- End-to-End (E2E) Testing
- Manual Testing





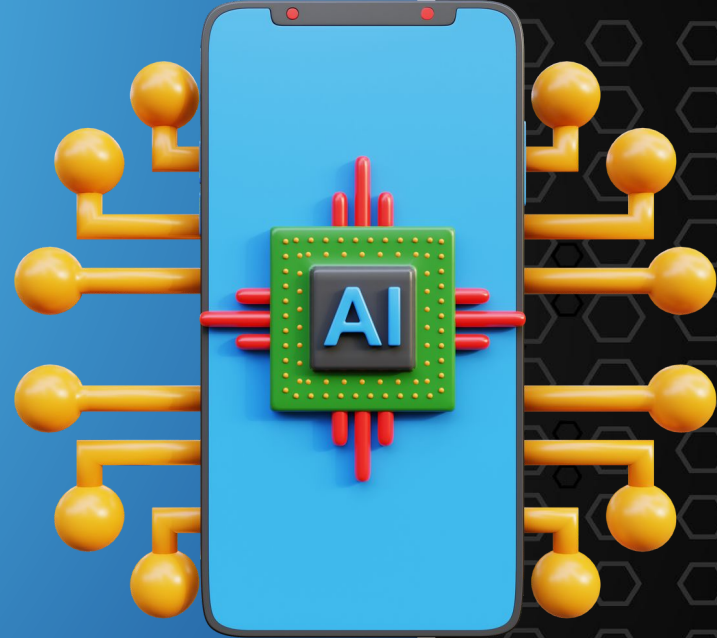
Testing Strategies

- Unit Testing 
- Integration Testing 
- Mocking
- End-to-End (E2E) Testing
- Manual Testing



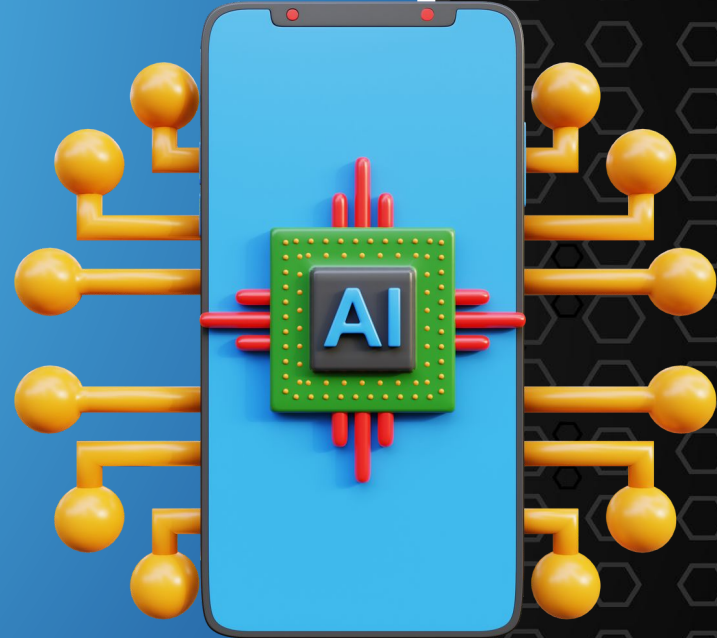
Testing Strategies

- Unit Testing 
- Integration Testing 
- Mocking 
- End-to-End (E2E) Testing
- Manual Testing





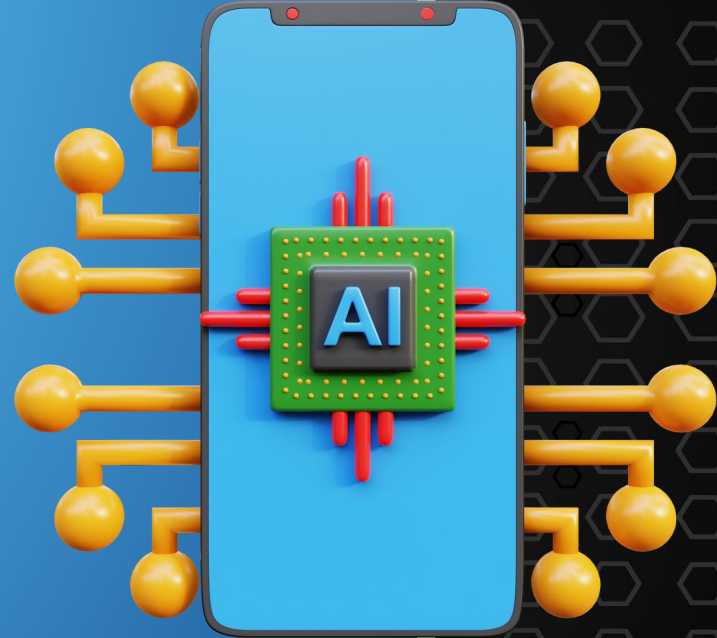
Testing Strategies

- Unit Testing 
- Integration Testing 
- Mocking 
- End-to-End (E2E) Testing 
- Manual Testing



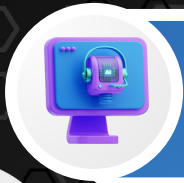
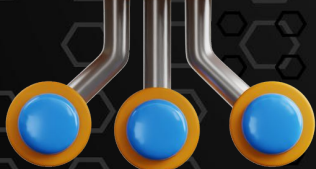
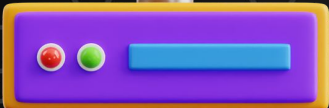
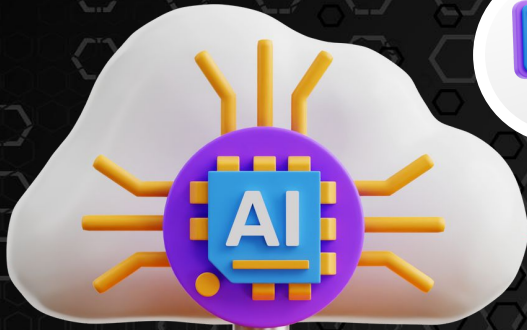
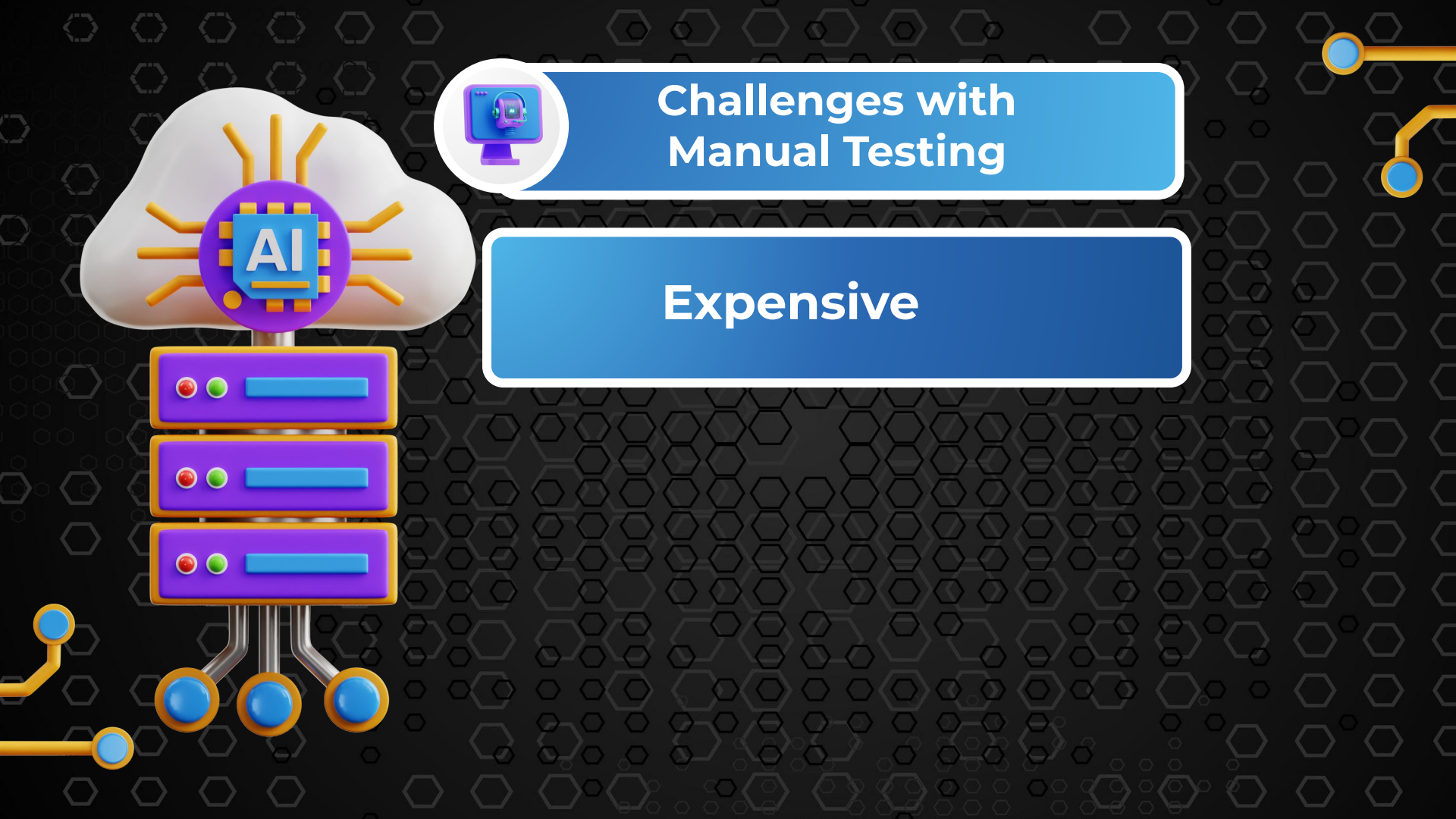
Testing Strategies

- Unit Testing 
- Integration Testing 
- Mocking 
- End-to-End (E2E) Testing 
- Manual Testing 



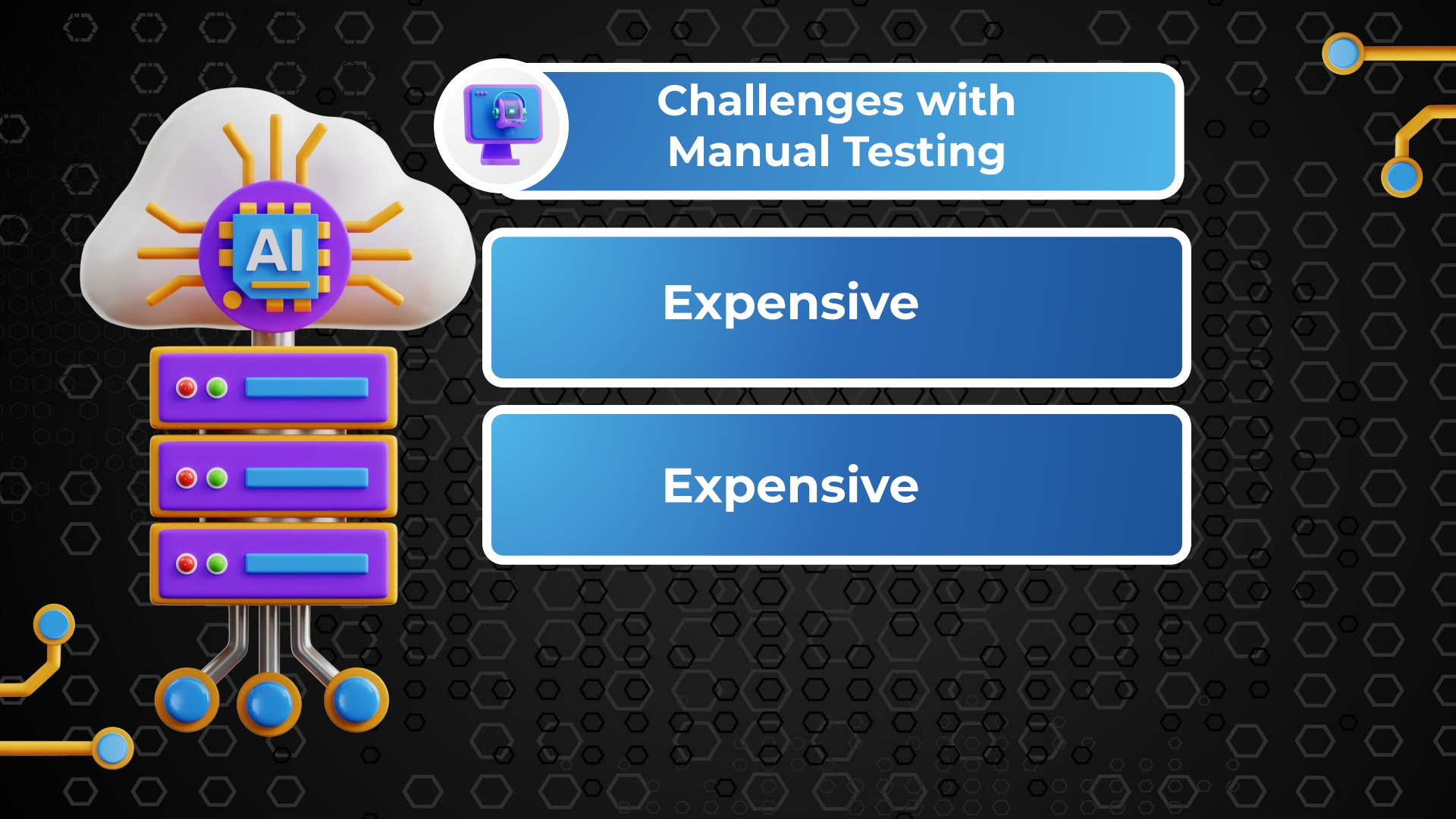
Challenges with Manual Testing





Challenges with Manual Testing

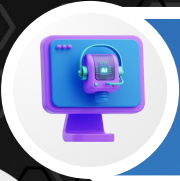
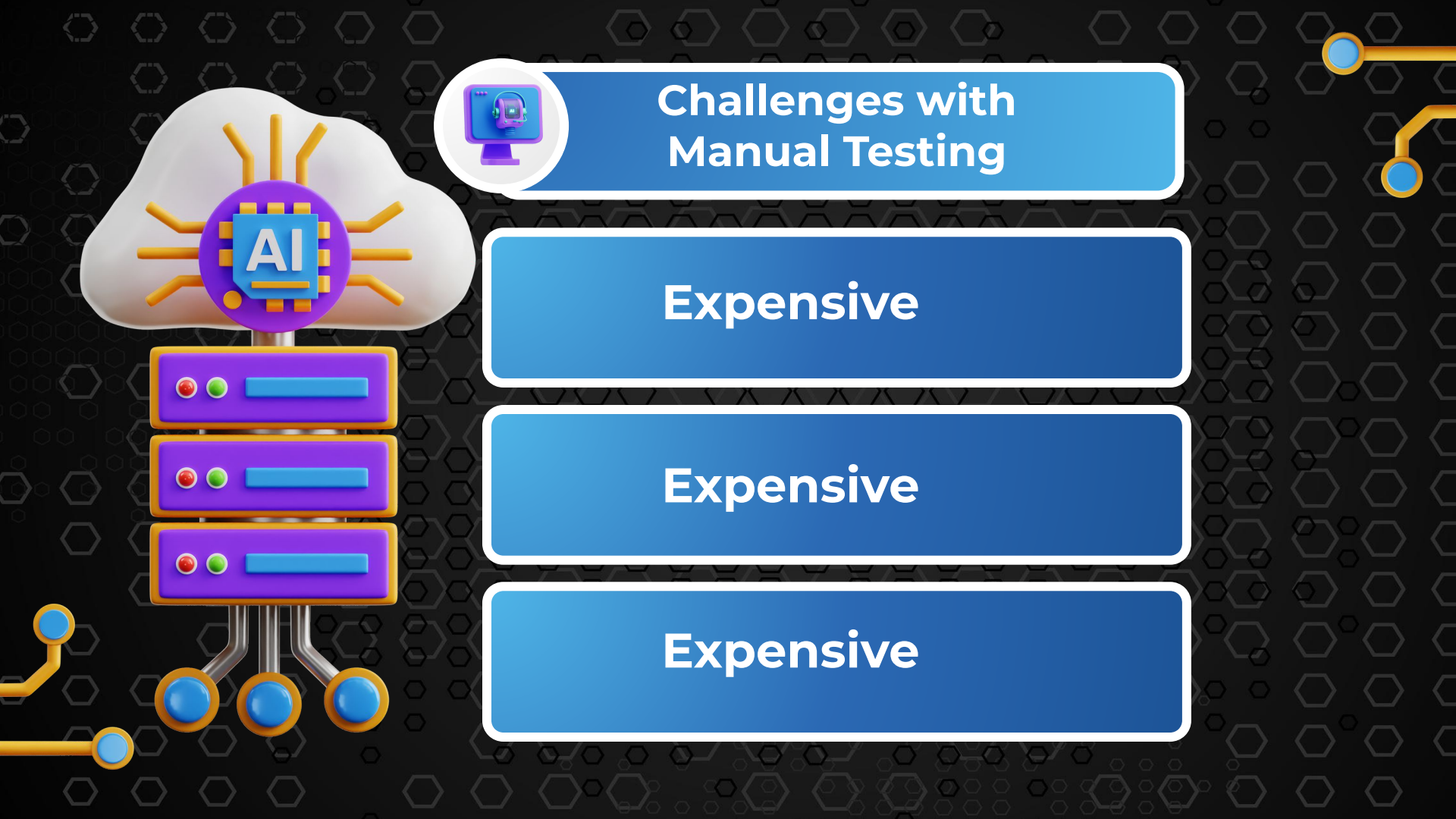
Expensive



Challenges with Manual Testing

Expensive

Expensive



Challenges with Manual Testing

Expensive

Expensive

Expensive

Introduction to Hybrid Testing Methodology



Hybrid testing combines various testing methodologies, tools, and strategies to create a comprehensive and robust testing framework for Social Media API integration. This approach leverages the strengths of different testing types, such as automated testing, manual testing, and AI-based testing, to address the unique challenges posed by social media platforms.

Key Components of Hybrid Testing

01

Automated Test Suites

Key Components of Hybrid Testing

- 01 Automated Test Suites
- 02 Manual Testing Protocols

Key Components of Hybrid Testing

- 01 Automated Test Suites
- 02 Manual Testing Protocols
- 03 AI Tools



Benefits of Hybrid Testing



01

Comprehensive Coverage

Benefits of Hybrid Testing

01 Comprehensive Coverage

02 Realistic Testing



Benefits of Hybrid Testing

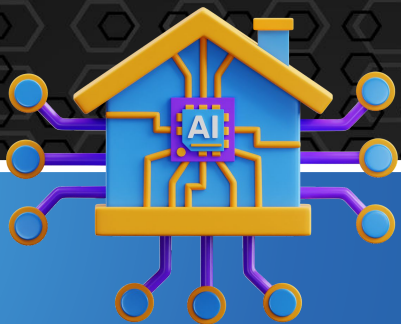
- 01 Comprehensive Coverage
- 02 Realistic Testing
- 03 Efficiency



Guideline for Preventing Account Blocking



- **Generate Unique Content**
- **Simulate Human Behavior**
- **Limit Test Account Activity**
- **Use Test Environments**
- **Monitor Account Health**



Summary



Q&A





Thank You!

Marina Rukavitsyna



Resource page

