

# Sandworms, Emergent Strategy, and Bug Hunting

Lessons from Dune for Software Testing



**HUSTEF**

HUNGARIAN SOFTWARE TESTING FORUM

# Sandworms, Emergent Strategy, and Bug Hunting

Lessons from Dune for Software Testing

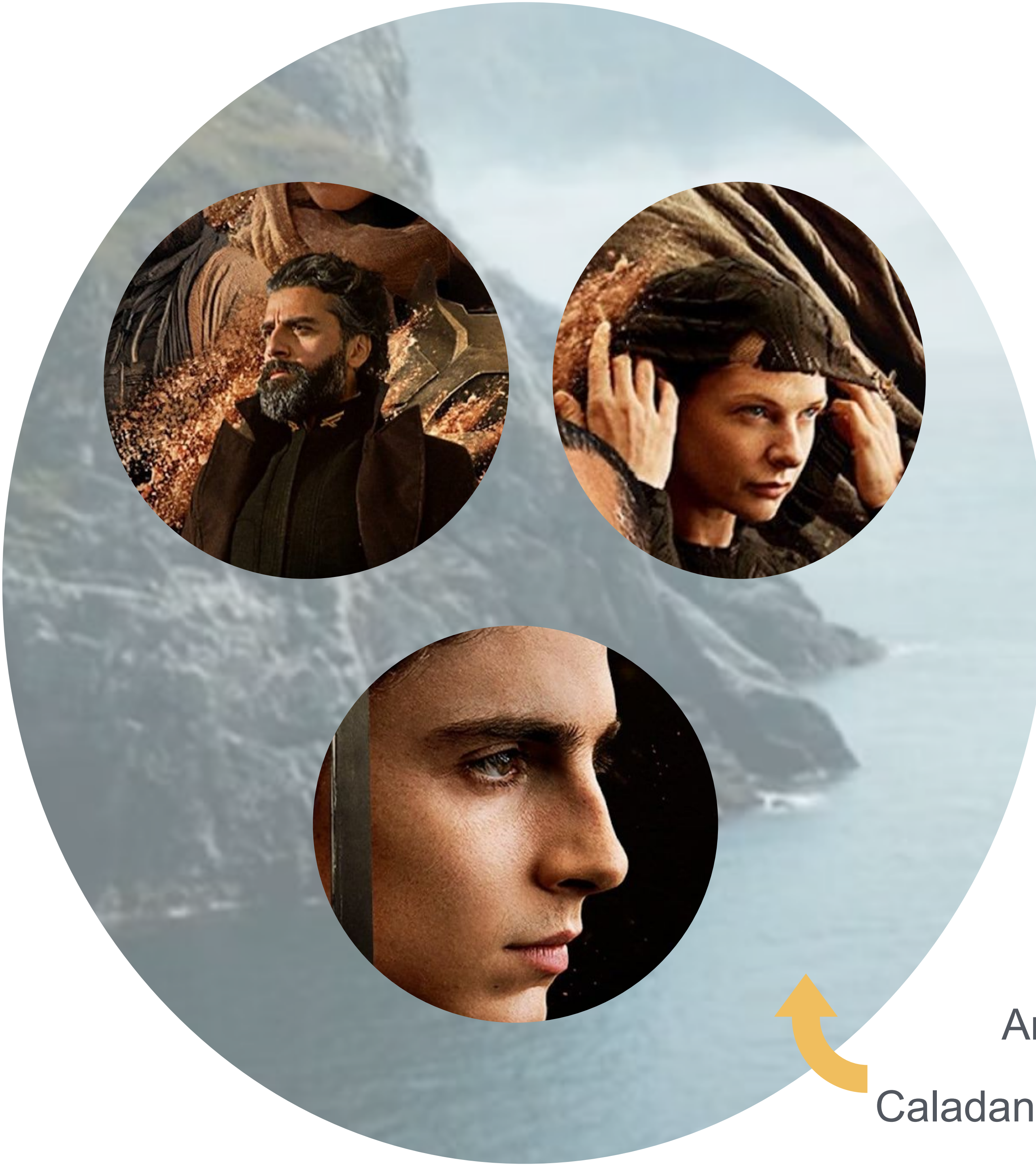
Anne-Marie Charrett 2024



# About Me

- Group Owner - Test Automation Tooling @ Telstra
- Software Testing chose me
- Consultant, Test Manager, Head of Engineering, two businesses, trainer & coach
- I write about Quality Coaching at [annemariecharrett.com](http://annemariecharrett.com)





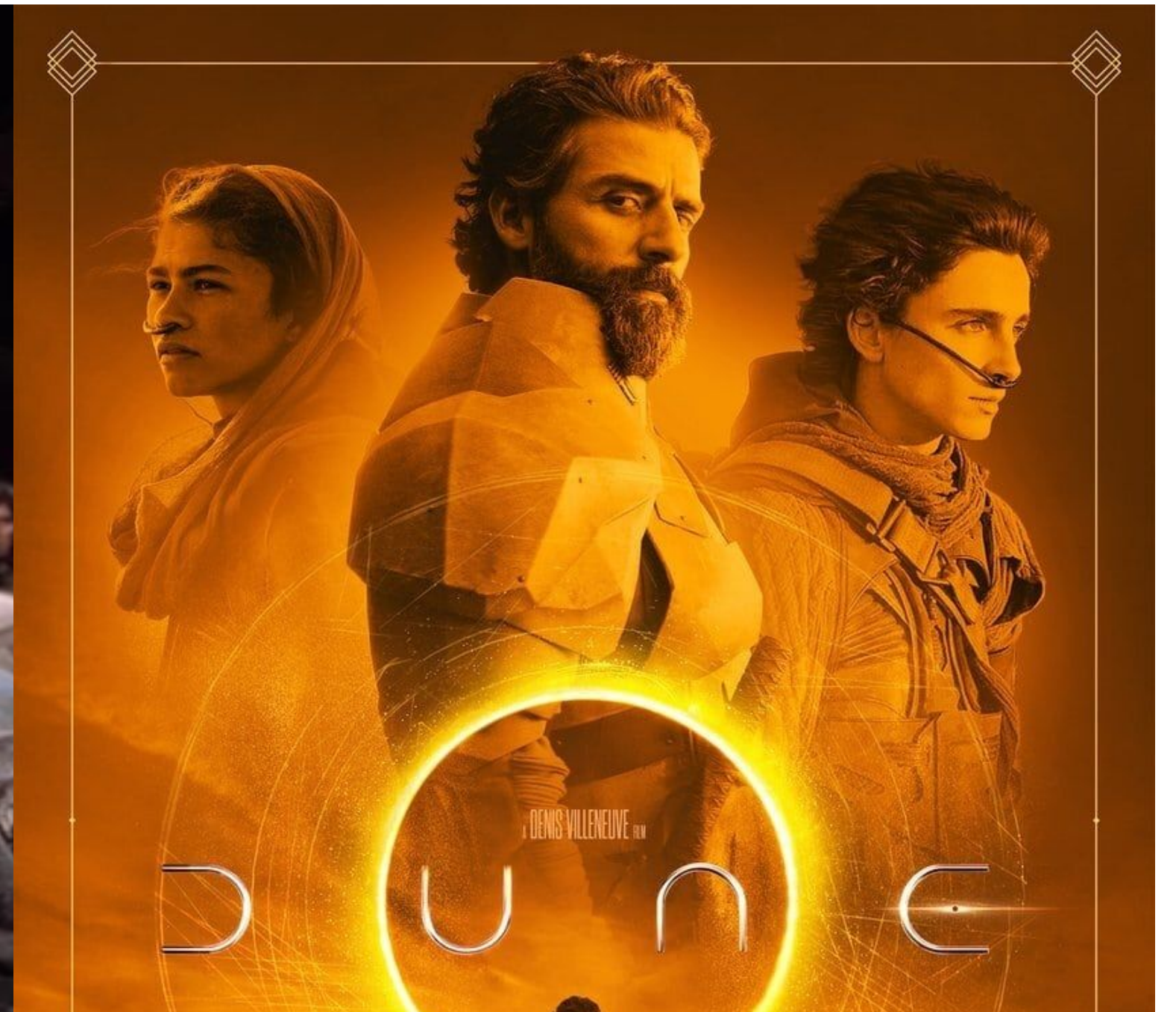
Frank Herbert Style



David Lynch Style



Denis Villeneuve Style





# Shaping Change

# Leadership

# Influence





# Shaping Change





A young man with curly hair is shown in a dark, moody setting. He is looking directly at the camera with a serious expression. The lighting is low, highlighting his face and hair against the dark background. The overall tone is mysterious and intense.

**Fear is the Mind Killer**



# Intentional Adaptation



A group of people, seen from behind, are walking across a vast, hazy desert landscape. They are wearing traditional, light-colored, heavy clothing, likely made of wool or cotton, suitable for a hot, arid environment. The terrain is flat and sandy, with some distant, low hills or mountains visible on the horizon. The sky is a pale, hazy blue, suggesting a bright, sunny day. The overall atmosphere is one of a long, arduous journey in a harsh, open environment.

# Desert Power



# Desert Power

# Modern Testing Strategy

## Sooner, Better, Happier

- Why change was required
- Where we are now and what we need to be
- Sooner: Automation but also burnout
- Better: Holistic Continuous Testing
- Happier: Giving teams agency and coaching





# Intentional Adaptation





# Decentralised Leadership

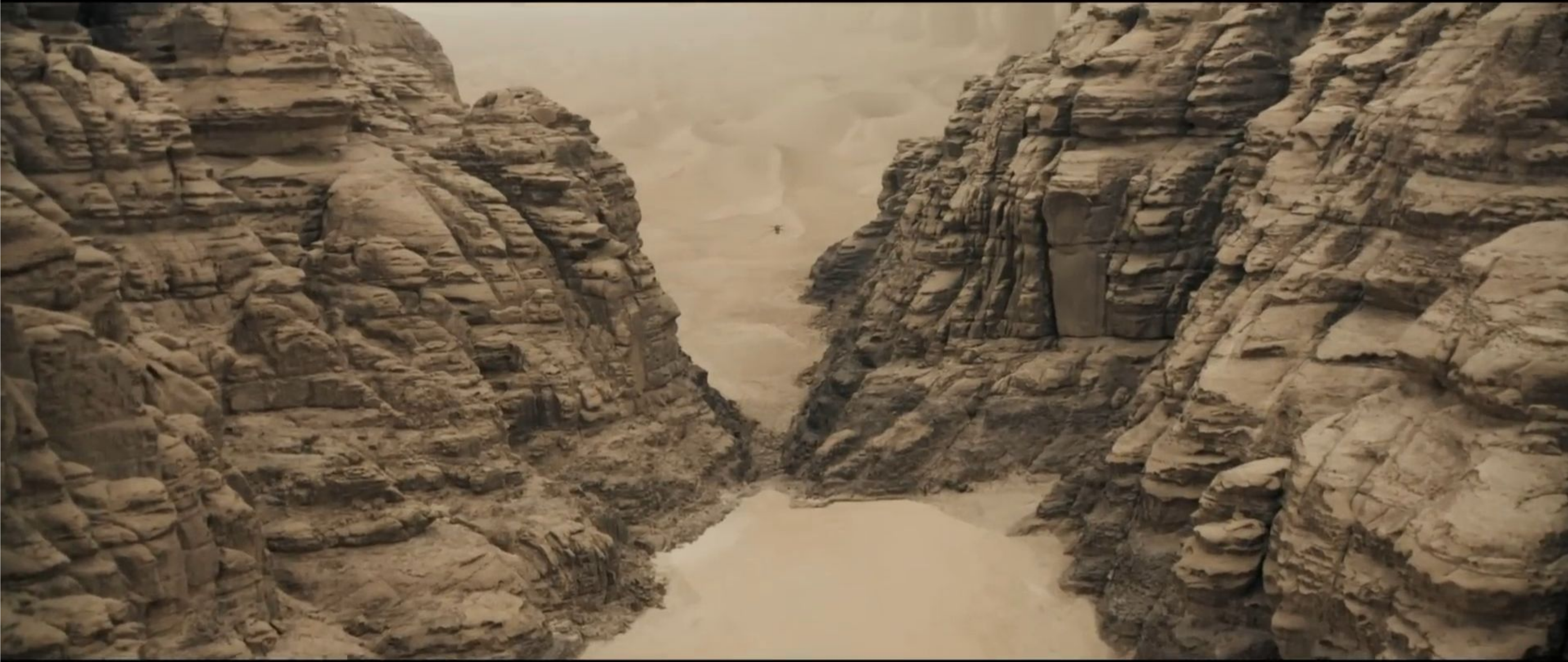
A close-up photograph of a mouse's head and shoulders. The mouse has greyish-brown fur and large, upright ears. The right ear is significantly larger and darker in color, appearing almost black with a textured, almost crystalline surface. The background is a plain, light-colored wall.

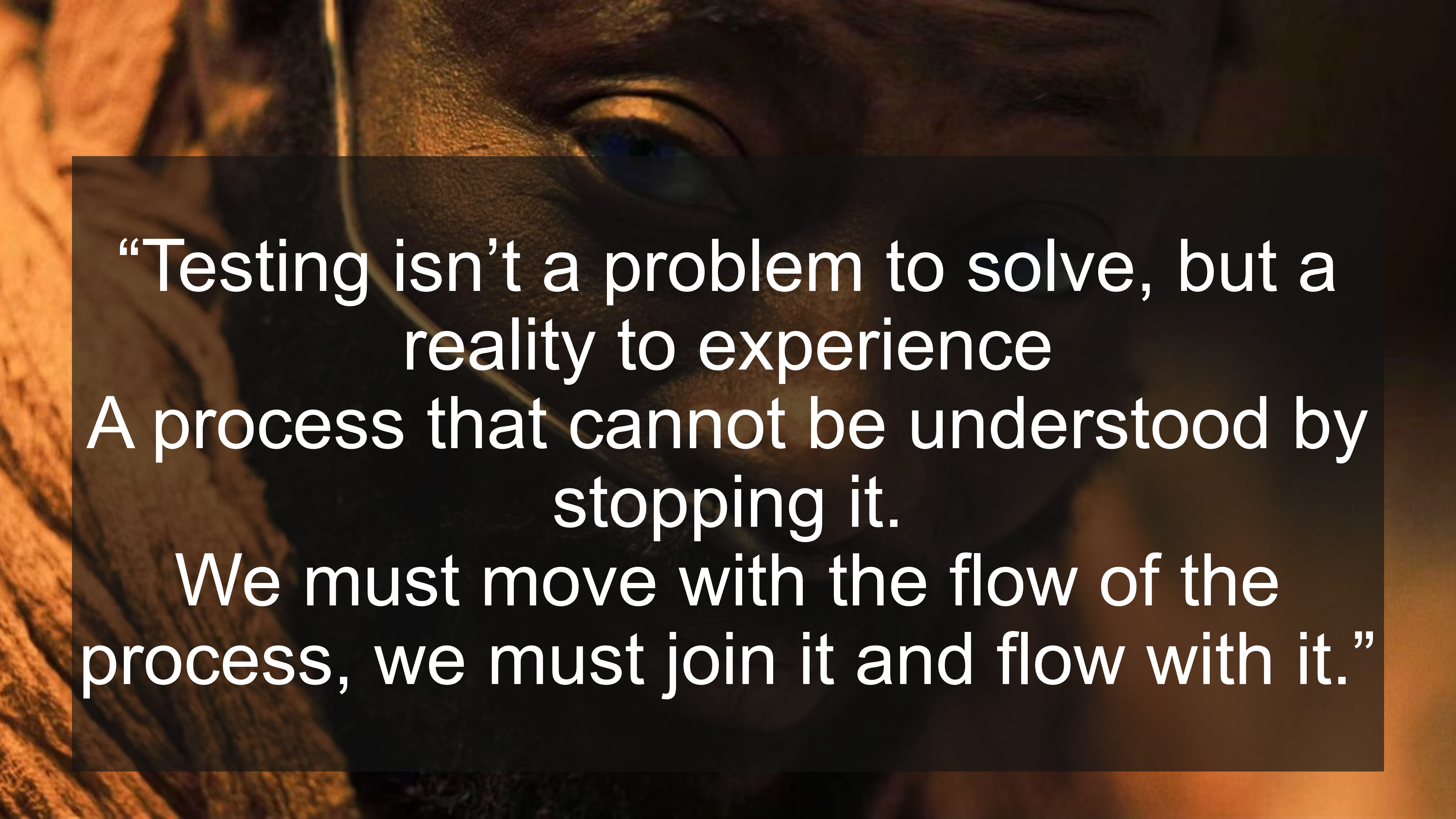
# Decentralised Leadership

WIP

# Influence





A close-up, high-contrast photograph of a person's face, focusing on the eyes and forehead. The lighting is dramatic, with deep shadows and bright highlights, creating a contemplative and intense atmosphere. The person's eyes are looking slightly to the side, and their expression is thoughtful.

“Testing isn’t a problem to solve, but a  
reality to experience  
A process that cannot be understood by  
stopping it.

We must move with the flow of the  
process, we must join it and flow with it.”



The Martian

